



New collection

300 references
4 technologies

All in 1

Creation 55
Creation 30

The Reference in LVT

Gerflor[®]

Ultrarealistische Oberflächen



EIR

Emboss in Register =
dekorsynchrone Oberflächenprägung
Exklusiv für Creation 55

Charming Oak



CHARMING OAK NATURE



CHARMING OAK BROWN



CHARMING OAK BEIGE 1278
DB C55 EIR | **SOLID CLIC*** C55 EIR
RIGID AC C55 EIR



CHARMING OAK GREY 1279
DB C55 EIR | **SOLID CLIC*** C55 EIR
RIGID AC C55 EIR



CHARMING OAK NATURE 1277
DB C55 EIR | **SOLID CLIC*** C55 EIR
RIGID AC C55 EIR



CHARMING OAK BROWN 1280
DB C55 EIR | **SOLID CLIC*** C55 EIR
RIGID AC C55 EIR

* 2022 mit Standard-Oberflächenprägung, ab 2023 verfügbar in EIR /
Available with classic emboss in 2022. Available with EIR in 2023

Lounge Oak



LOUNGE OAK BEIGE 1272
DB C55 EIR | **SOLID CLIC*** C55 EIR
RIGID AC C55 EIR



LOUNGE OAK NATURAL 1273
DB C55 EIR | **SOLID CLIC*** C55 EIR
RIGID AC C55 EIR



LOUNGE OAK GOLDEN 1271
DB C55 EIR | **SOLID CLIC*** C55 EIR
RIGID AC C55 EIR



LOUNGE OAK CHESTNUT 1274
DB C55 EIR | **SOLID CLIC*** C55 EIR
RIGID AC C55 EIR

• 2022 mit Standard-Oberflächenprägung, ab 2023 verfügbar in EIR /
Available with classic emboss in 2022. Available with EIR in 2023

DB = Dry Back - Zum Verkleben

CREATION BY GERFLOR

LOUNGE OAK BEIGE

LOUNGE OAK CHESTNUT



White Lead Oak



WHITE LEAD OAK BLOND 1288
DB C55 EIR / C30*



WHITE LEAD OAK DARK BEIGE 1289
DB C55 EIR / C30*



WHITE LEAD OAK SHADOW GREY 1290
DB C55 EIR / C30*

* C30 Oberfläche "Brushed"

DB = Dry Back - Zum Verkleben

CREATION BY GERFLOR



WHITE LEAD OAK SHADOW GREY

Northwood



NORTHWOOD MACCHIATO 0816
DB C30



NORTHWOOD MOKACCINO 0817
DB C30

DB = Dry Back - Zum Verkleben

CREATION BY GERFLOR



NORTHWOOD MOKACCINO

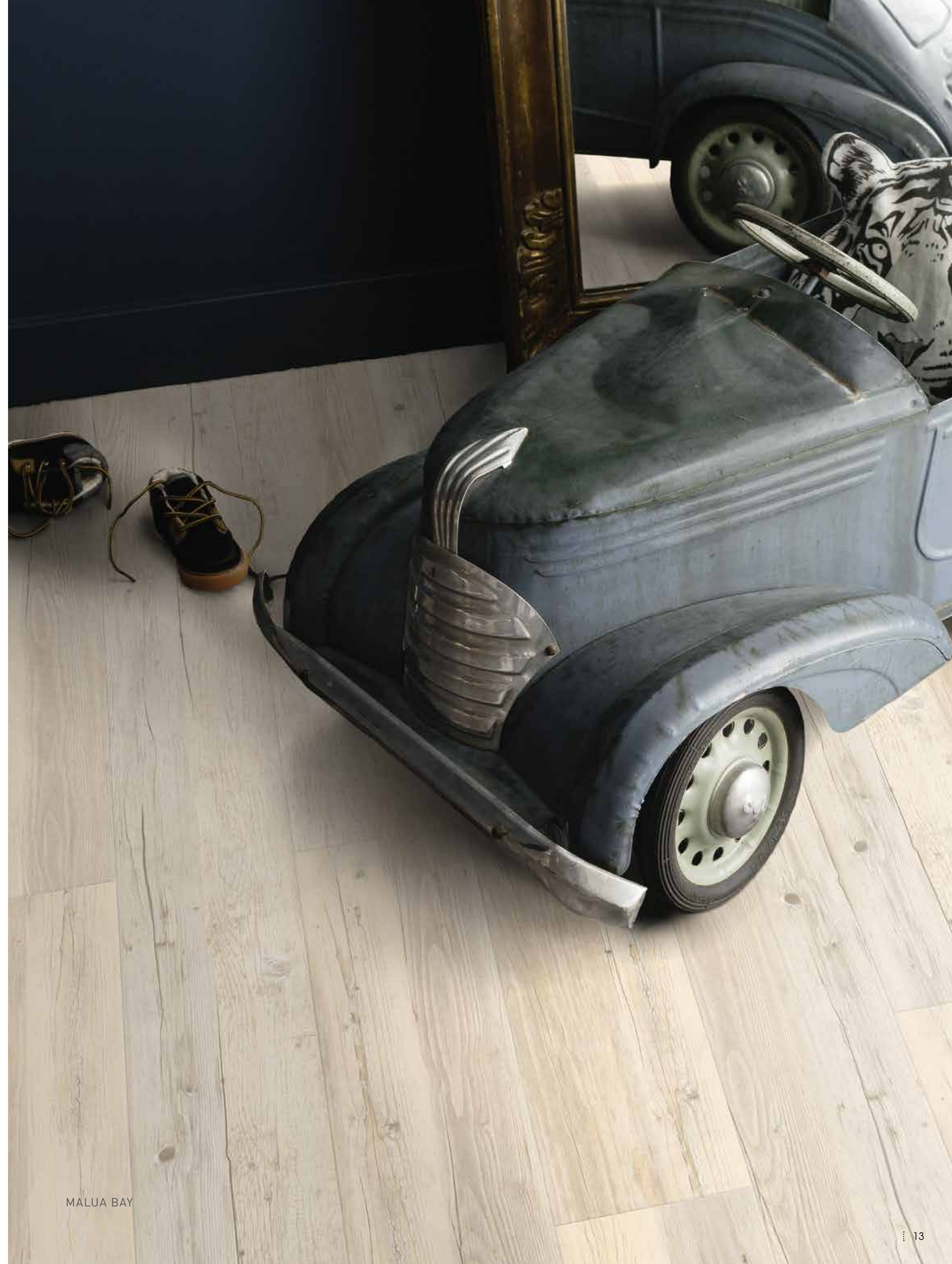
Malua Bay



MALUA BAY 0448
DB C55 / C30 | **SOLID CLIC** C55 / C30
RIGID AC C55 | LL C55 | LL AC C55

DB = Dry Back - Zum Verkleben

CREATION BY GERFLOR



MALUA BAY

MALUA BAY

White Lime



WHITE LIME 0584
DB C55 / C30 | **SOLID CLIC** C55 / C30
RIGID AC C55

DB = Dry Back - Zum Verkleben

CREATION BY GERFLOR



WHITE LIME

Bostonian Oak



BOSTONIAN OAK BEIGE 0853
DB C55 / C30 | **SOLID CLIC** C55 / C30
RIGID AC C55 | LL C55



BOSTONIAN OAK HONEY 0851
DB C55 / C30 | **SOLID CLIC** C55 / C30
RIGID AC C55



BOSTONIAN OAK 0871
DB C55 / C30 | **SOLID CLIC** C55 / C30
RIGID AC C55 | LL C55



BOSTONIAN OAK GREY 0855
DB C30



DB = Dry Back - Zum Verkleben

CREATION BY GERFLOR



BOSTONIAN OAK BEIGE

BOSTONIAN OAK BEIGE

Braukerne



BRAUKERNE BEIGE 1293
DB 184 x 1219 | **SOLID CLIC** 212 x 1239



BRAUKERNE NATURAL 1292
DB 184 x 1219 | **SOLID CLIC** 212 x 1239



DB = Dry Back - Zum Verkleben

CREATION BY GERFLOR



BRAUKERNE BEIGE

BRAUKERNE NATURAL

Long Board



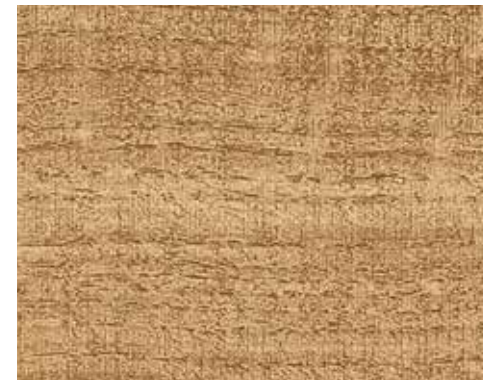
LONG BOARD 0455
DB C55 / C30 | **SOLID CLIC** C55 / C30
RIGID AC C55 | LL C55 | LL AC C55

DB = Dry Back - Zum Verkleben

CREATION BY GERFLOR



Swiss Oak



SWISS OAK GOLDEN 0796
DB C55 / C30 | **SOLID CLIC** C55 / C30
RIGID AC C55 | LL C55 | LL AC C55



SWISS OAK BEIGE 0848
DB C55 / C30 | **SOLID CLIC** C55 / C30
RIGID AC C55



SWISS OAK CASHMERE 0795
DB C30



SWISS OAK PEARL 0846
DB C55 / C30 | **SOLID CLIC** C55 / C30
RIGID AC C55 | LL C55 | LL AC C55



DB = Dry Back - Zum Verkleben

CREATION BY GERFLOR



SWISS OAK PEARL

SWISS OAK BEIGE

Twist



TWIST 0504
DB C55 / C30 | **SOLID CLIC** C55 / C30
RIGID AC C55 | LL C55 | LL AC C55



DB = Dry Back - Zum Verkleben

CREATION BY GERFLOR



TWIST

TWIST

Mansfield



MANSFIELD NATURAL 0069
DB C55



MANSFIELD LIGHT 0068
DB C55



DB = Dry Back - Zum Verkleben

CREATION BY GERFLOR

MANSFIELD LIGHT



MANSFIELD NATURAL

Honey Oak



HONEY OAK 0441
DB C55 / C30 | **SOLID CLIC** C55 / C30
RIGID AC C55 | **LL** C55 | **LL AC** C55

DB = Dry Back - Zum Verkleben

CREATION BY GERFLOR



HONEY OAK

HONEY OAK

Cambridge



CAMBRIDGE 0465
DB C55 / C30 | SOLID CLIC C55



DB = Dry Back - Zum Verkleben

CREATION BY GERFLOR



CAMBRIDGE

Ballerina



BALLERINA 0347
DB C55 / C30 | **SOLID CLIC** C55 / C30
RIGID AC C55 | LL C55 | LL AC C55



DB = Dry Back - Zum Verkleben

CREATION BY GERFLOR



BALLERINA

BALLERINA

Quartet



QUARTET HONEY 0870
DB C55 / C30 | **SOLID CLIC** C55 / C30
RIGID AC C55 | LL C55



QUARTET FAUVE 0859
DB C55 / C30 | **SOLID CLIC** C55 / C30
RIGID AC C55 | LL C55



QUARTET 0503
DB C55 / C30 | **SOLID CLIC** C55 / C30
RIGID AC C55

DB = Dry Back - Zum Verkleben

CREATION BY GERFLOR



QUARTET FAUVE

Oak Fantasy



OAK FANTASY BROWN 1294
DB C30 | SOLID CLIC C30



OAK FANTASY GREY 1295
DB C30 | SOLID CLIC C30



OAK FANTASY HONEY 1296
DB C30 | SOLID CLIC C30



DB = Dry Back - Zum Verkleben

CREATION BY GERFLOR

OAK FANTASY GREY



Cedar Brown



CEDAR BROWN 0850
DB C55 / C30 | **SOLID CLIC** C55 / C30
RIGID AC C55



CEDAR PURE 0849
DB C55 / C30 | **SOLID CLIC** C55 / C30
RIGID AC C55



DB = Dry Back - Zum Verkleben

CREATION BY GERFLOR



CEDAR BROWN

CEDAR BROWN

Rustic Oak



RUSTIC OAK 0445
DB C55 / C30 | **SOLID CLIC** C55 / C30
RIGID AC C55

DB = Dry Back - Zum Verkleben

CREATION BY GERFLOR



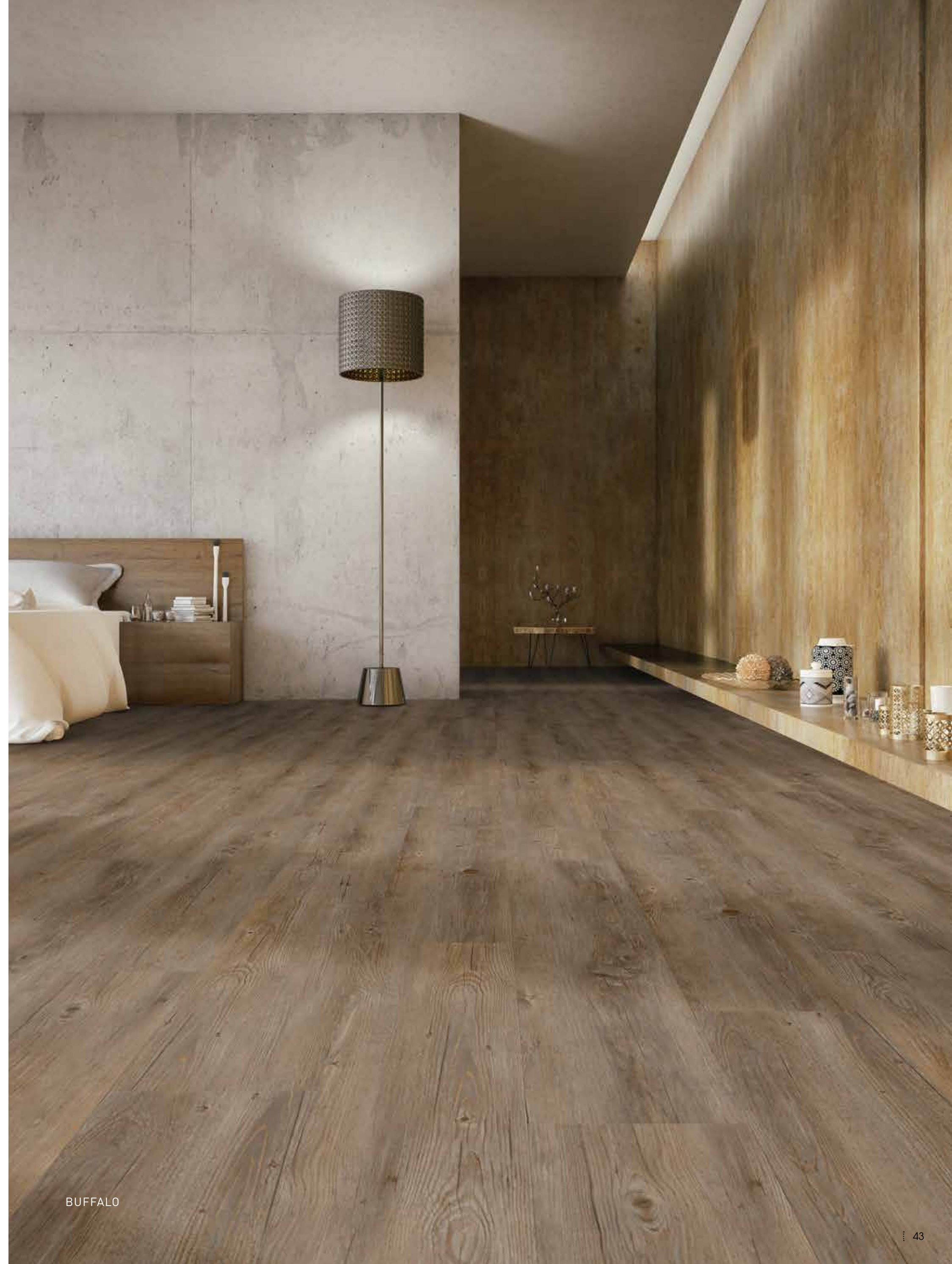
RUSTIC OAK

RUSTIC OAK

Buffalo



BUFFALO 0457
DB C55 / C30 | **SOLID CLIC C55**



Amarante



AMARANTE 0579
DB C55 / C30



Brownie

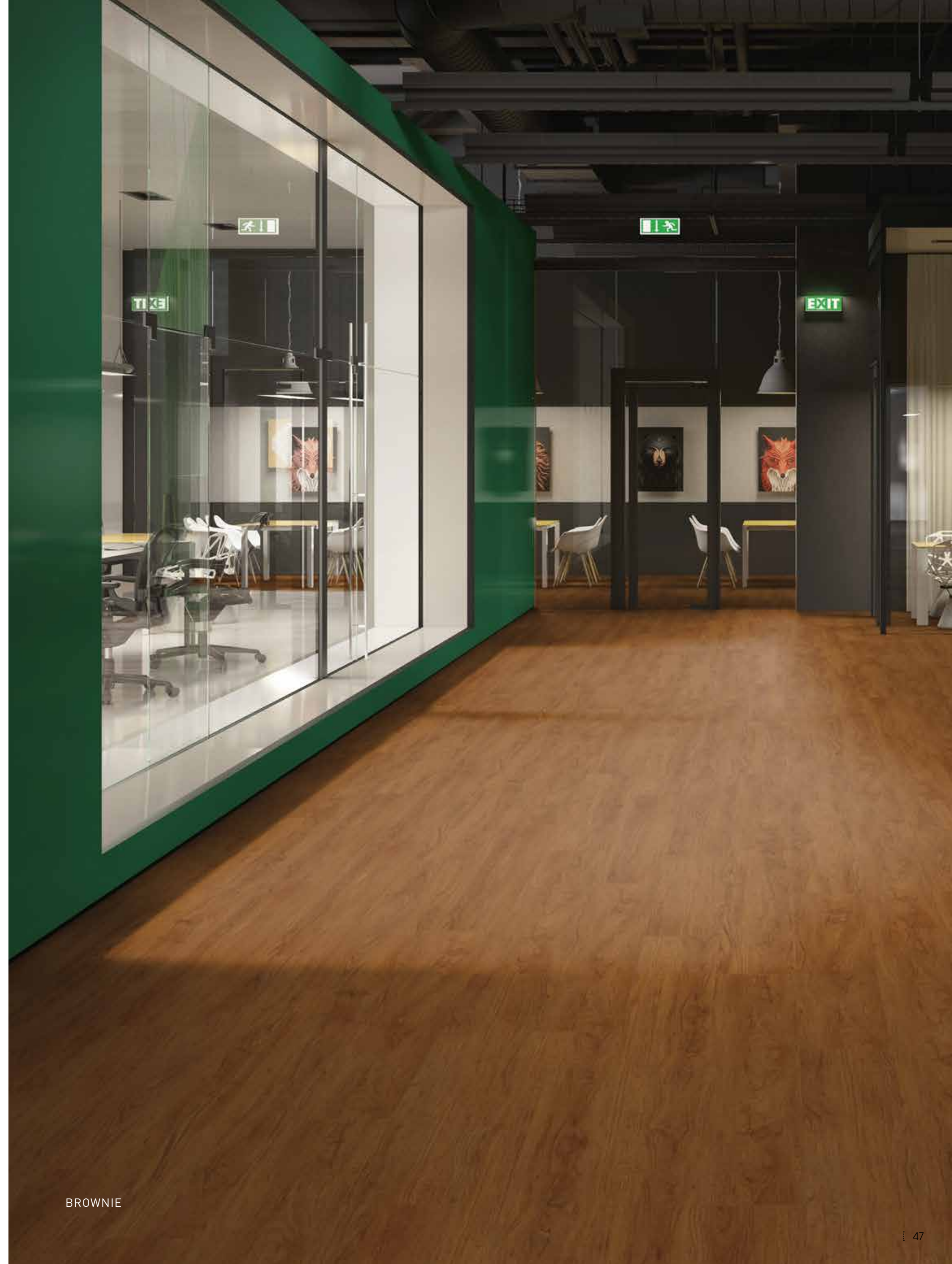


BROWNIE 0459
DB C55 / C30



DB = Dry Back - Zum Verkleben

CREATION BY GERFLOR



BROWNIE

BROWNIE

Michigan



MICHIGAN 0461
DB C55 / C30 | **SOLID CLIC** C55 / C30
RIGID AC C55



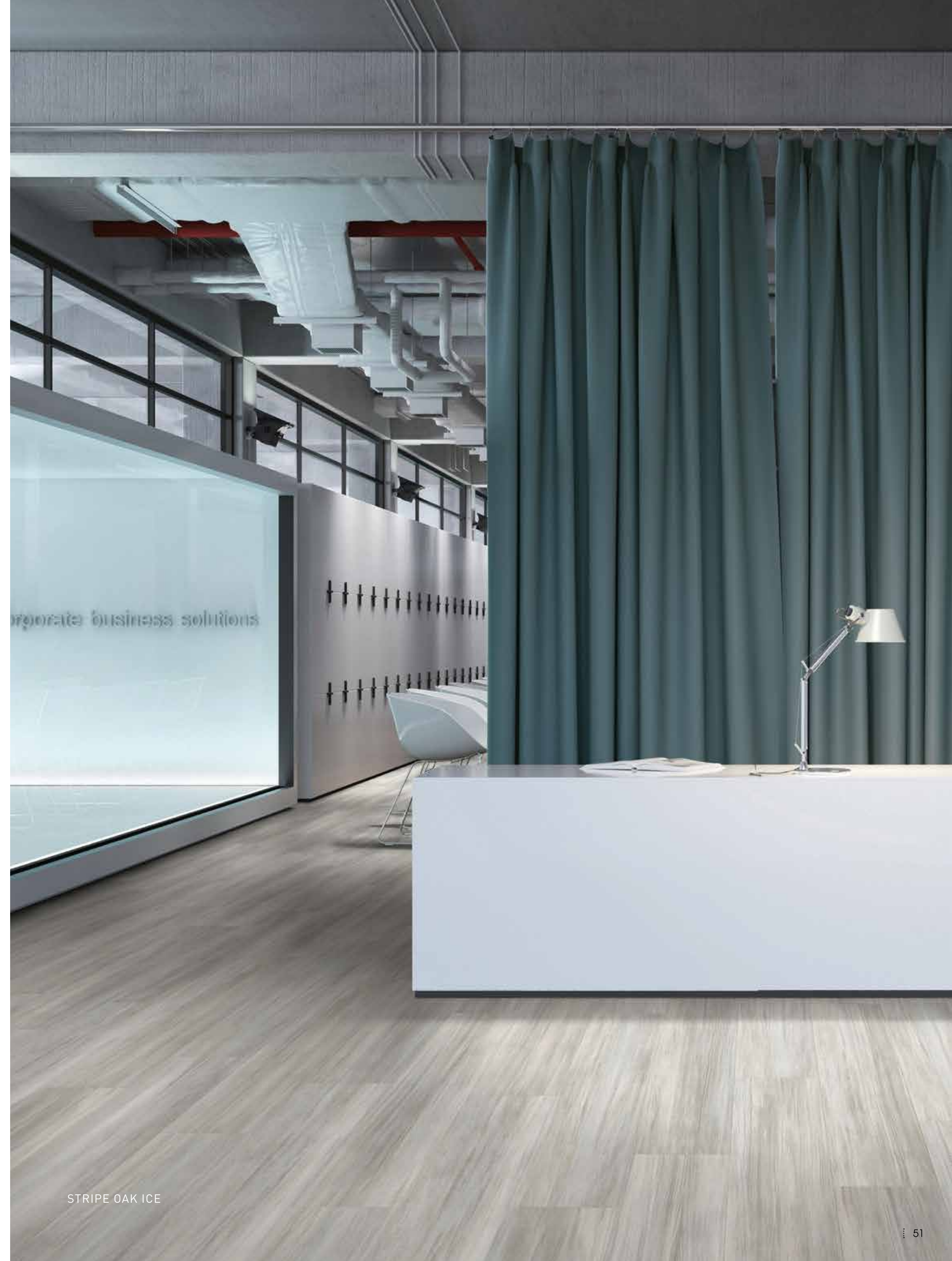
Stripe Oak



STRIPE OAK ICE 0858
DB C55 / C30 | SOLID CLIC C55

DB = Dry Back - Zum Verkleben

CREATION BY GERFLOR



STRIPE OAK ICE

STRIPE OAK ICE

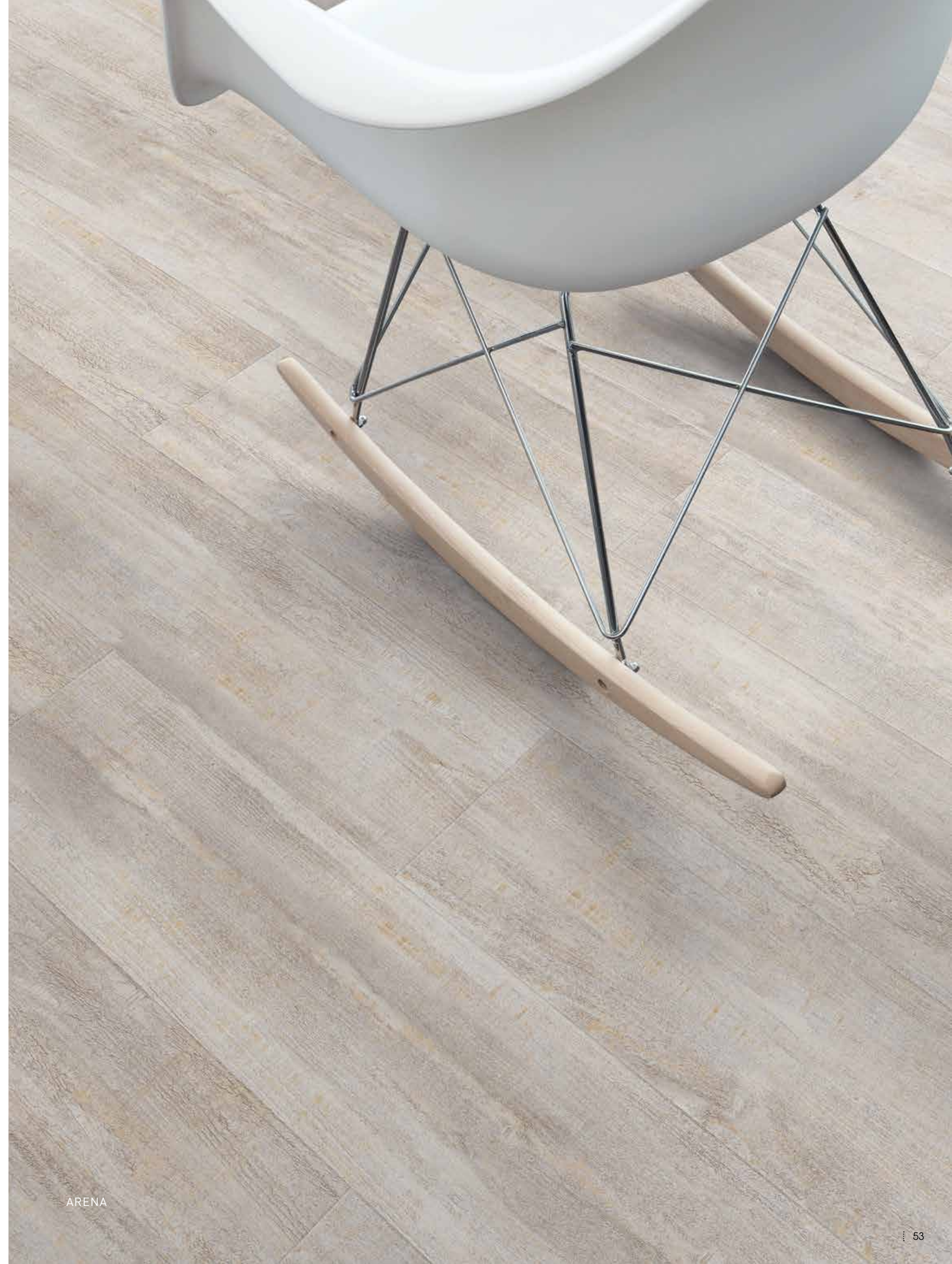
Arena



ARENA 0060
DB C55 / C30 | **SOLID CLIC** C55
LL C55 | **LL AC** C55

DB = Dry Back - Zum Verkleben

CREATION BY GERFLOR



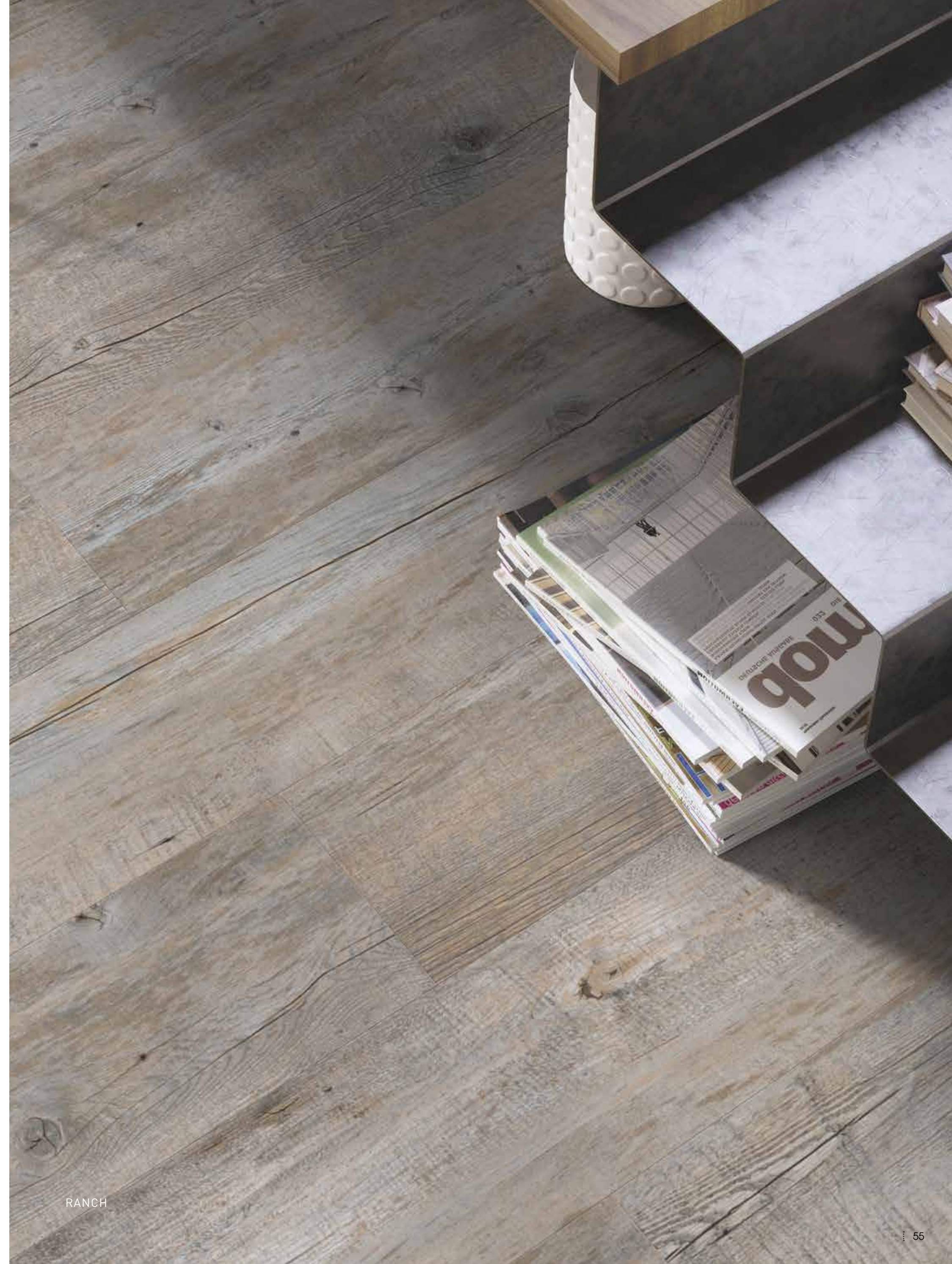
Ranch



RANCH 0456
DB C55 / C30 | **SOLID CLIC** C55 / C30
RIGID AC C55 | LL C55 | LL AC C55

DB = Dry Back - Zum Verkleben

CREATION BY GERFLOR



RANCH

RANCH

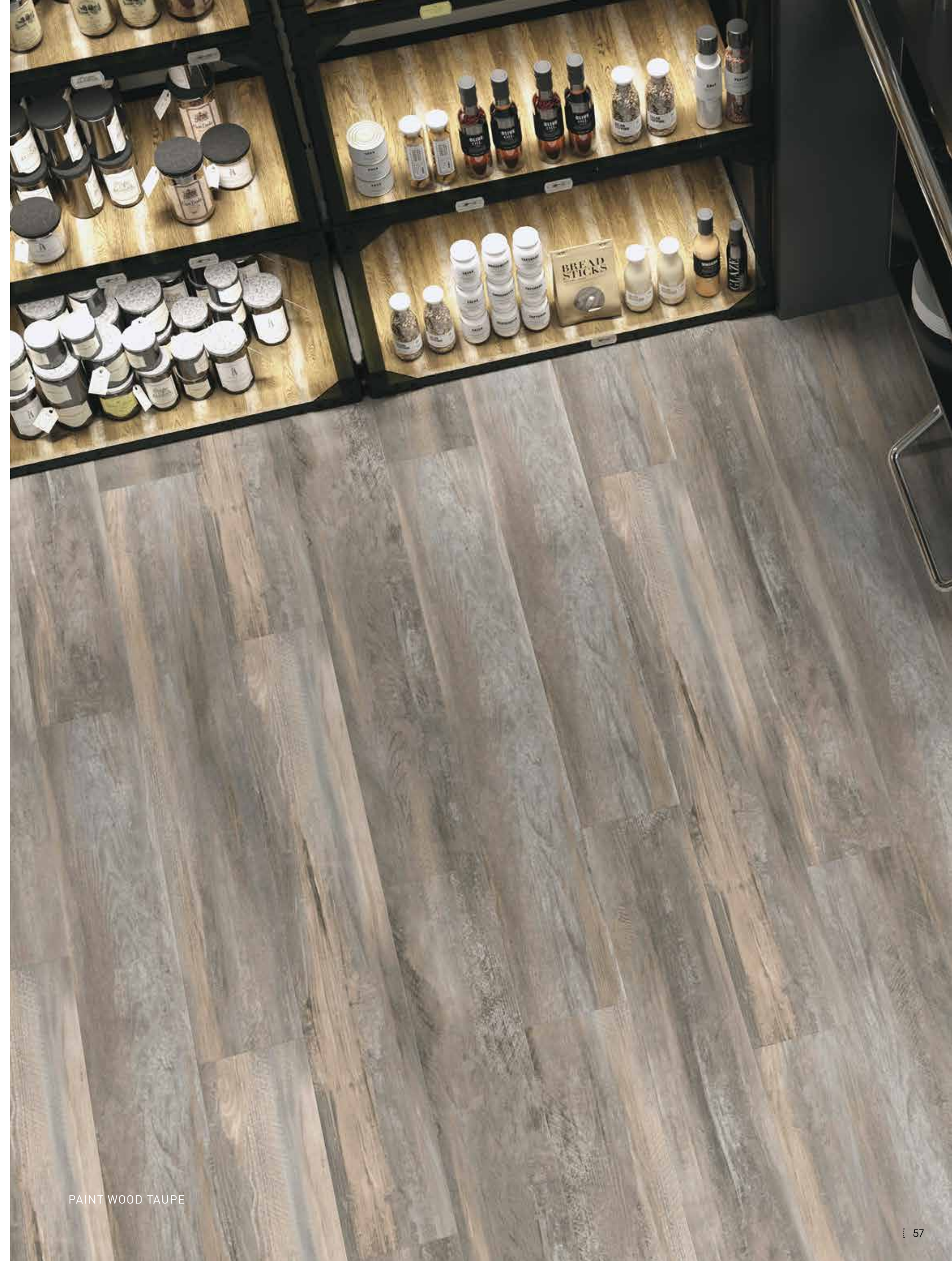
Paint Wood



PAINT WOOD TAUPE 0856
DB C55 / C30 | SOLID CLIC C55

DB = Dry Back - Zum Verkleben

CREATION BY GERFLOR



PAINT WOOD TAUPE

PAINT WOOD TAUPE

Amador



AMADOR 0447
DB C55 / C30 | **SOLID CLIC** C55 / C30
RIGID AC C55 | LL C55 | LL AC C55



DB = Dry Back - Zum Verkleben

CREATION BY GERFLOR



Oxford



OXFORD 0061
DB C55 / C30 | SOLID CLIC C55



Chevron Hurricane



CHEVRON HURRICANE 0809
DB C30



DB = Dry Back - Zum Verkleben

CREATION BY GERFLOR



CHEVRON HURRICANE

CHEVRON HURRICANE

Reggia Ivory



REGGIA IVORY 0861
DB C30



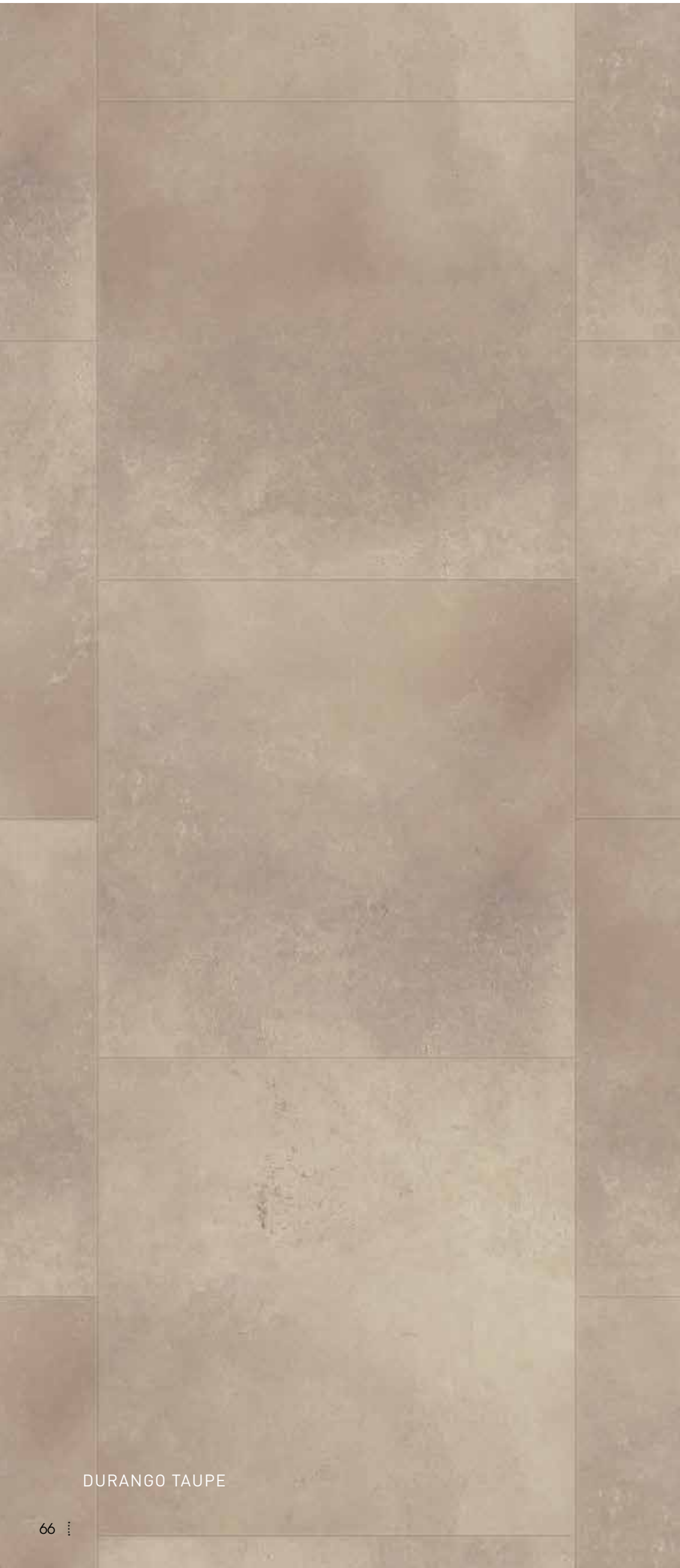
DB = Dry Back - Zum Verkleben

CREATION BY GERFLOR



REGGIA IVORY

Durango



DURANGO TAUPE 0751
DB C30



DURANGO MOKA 0750
DB C30



Salento



SALENTO LIGHT GREY 1287
DB C55 / C30 | **SOLID CLIC** C55 / C30
RIGID AC C55



SALENTO BEIGE 1286
DB C55 / C30 | **SOLID CLIC** C55 / C30
RIGID AC C55



DB = Dry Back - Zum Verkleben

CREATION BY GERFLOR



SALENTO BEIGE

SALENTO LIGHT GREY

Curton Stone



CURTON STONE LIGHT BEIGE 1276
DB C55 / C30 | **SOLID CLIC** C55 / C30
RIGID AC C55



CURTON STONE LIGHT GREY 1275
DB C55 / C30 | **SOLID CLIC** C55 / C30
RIGID AC C55



DB = Dry Back - Zum Verkleben

CREATION BY GERFLOR



CURTON STONE LIGHT BEIGE

Palissandro



PALISSANDRO BEIGE 1282
DB C55 | SOLID CLIC C55



PALISSANDRO GREY 1281
DB C55 | SOLID CLIC C55



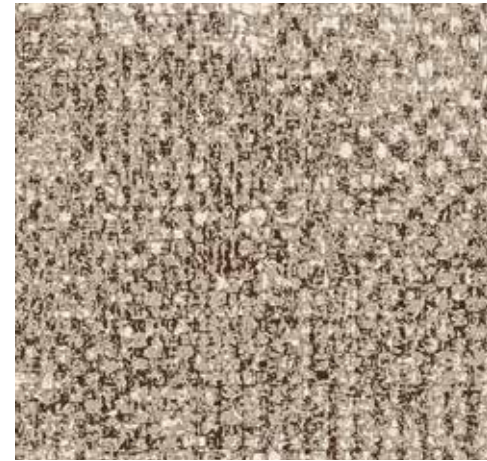
DB = Dry Back - Zum Verkleben

CREATION BY GERFLOR

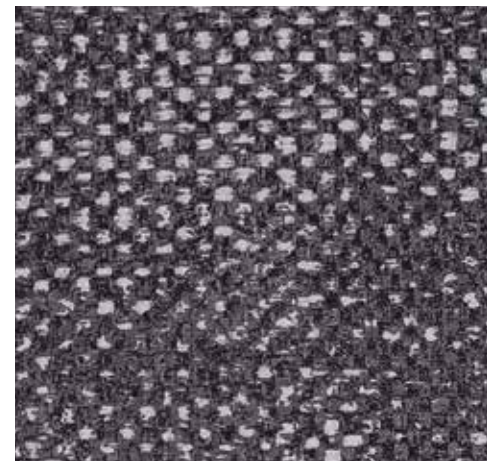


PALISSANDRO GREY

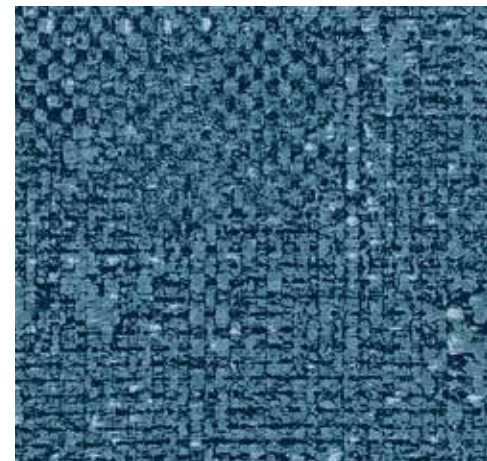
Fabrik Mix



FABRIK MIX JUTE 1268
DB C55 | SOLID CLIC C55



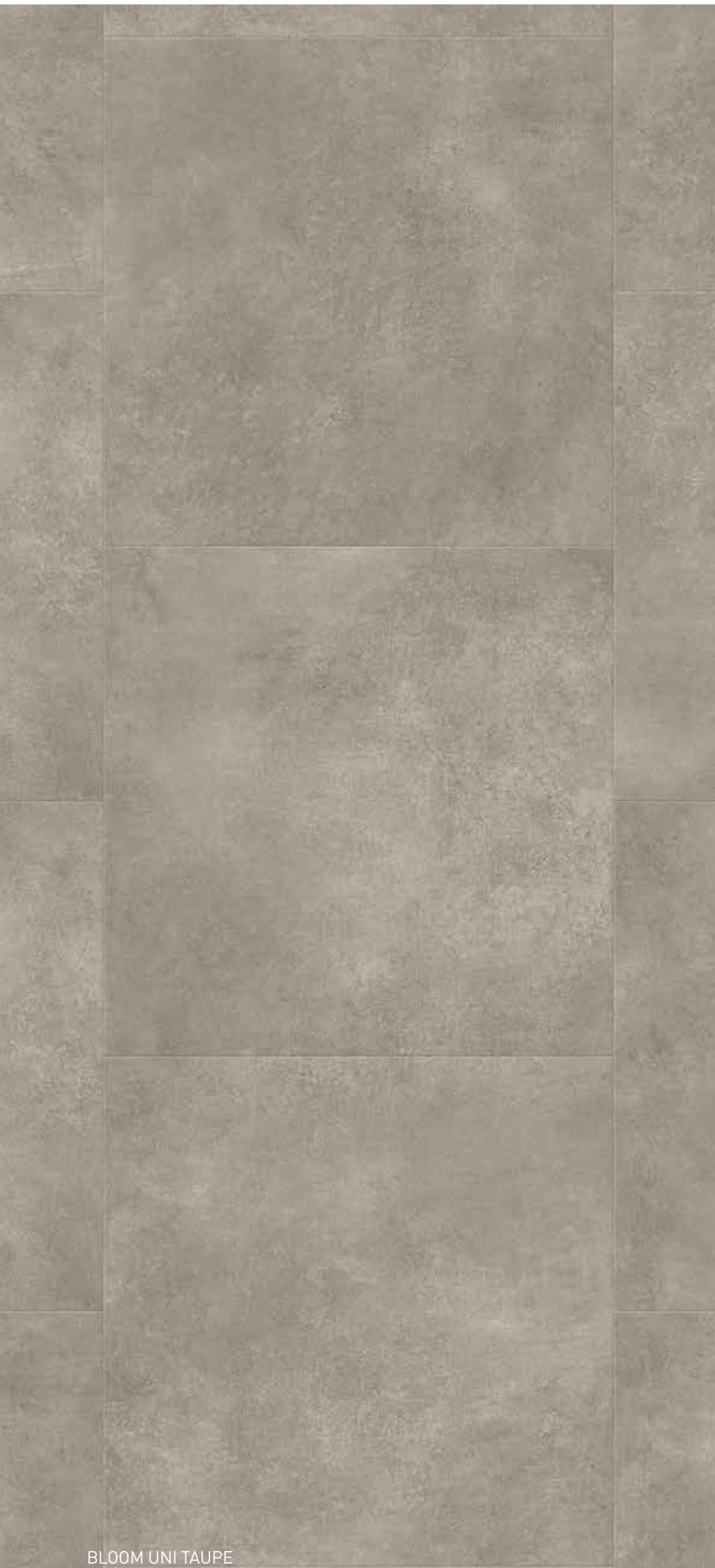
FABRIK MIX DARK GREY 1269
DB C55 | SOLID CLIC C55 | LL C55



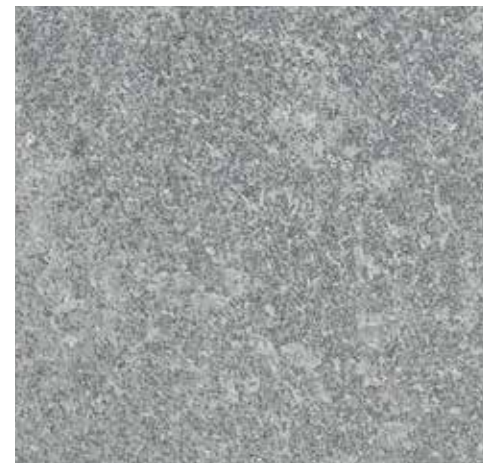
FABRIK MIX INDIGO 1270
DB C55 | LL C55



Bloom Uni



BLOOM UNI TAUPE 0868
DB C55 / C30 | **SOLID CLIC** C55 / C30
RIGID AC C55 | LL C55

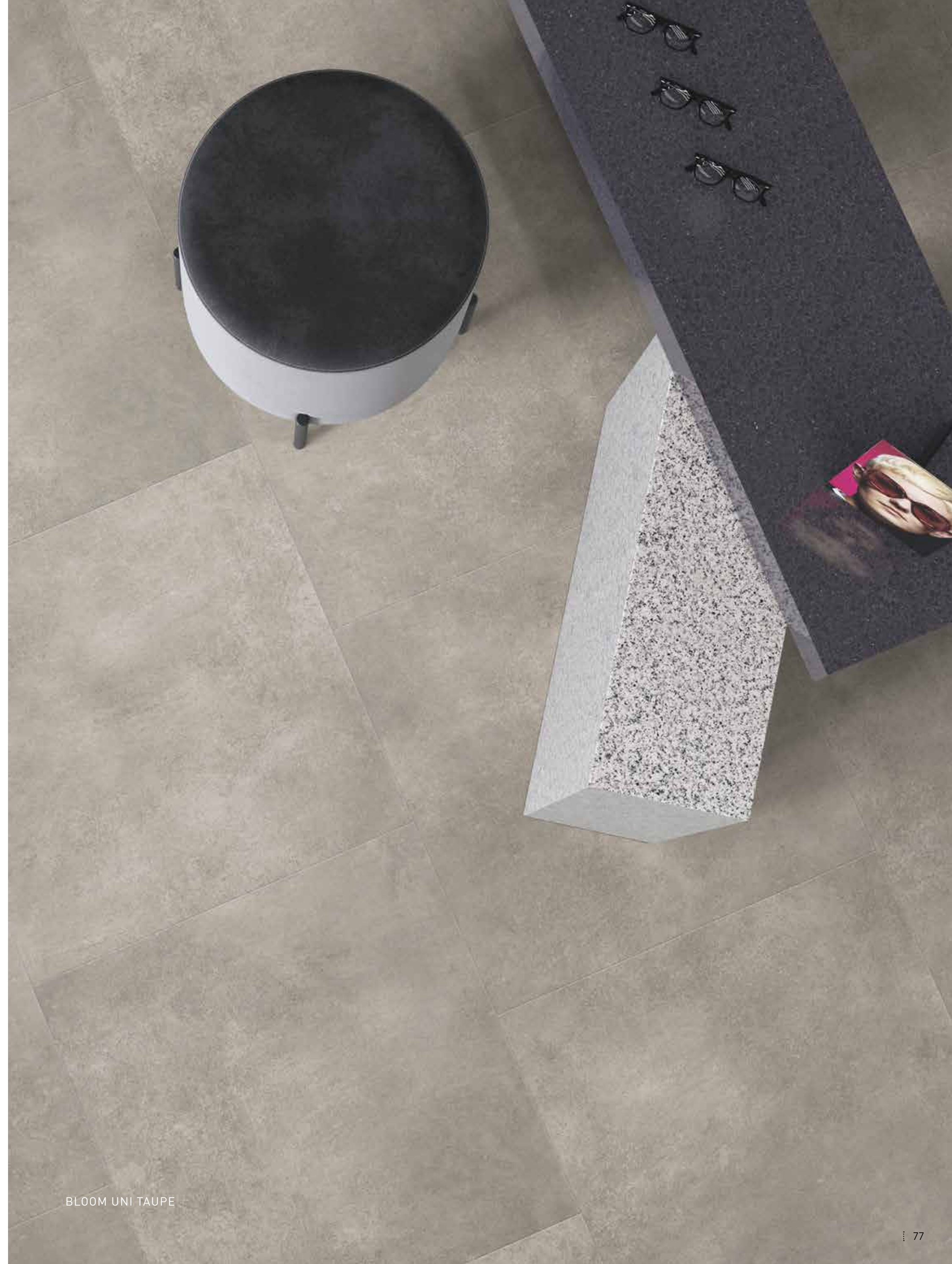


BLOOM UNI GREY 0869
DB C55 / C30 | **SOLID CLIC** C55 / C30
RIGID AC C55 | LL C55



DB = Dry Back - Zum Verkleben

CREATION BY GERFLOR



BLOOM UNI TAUPE

Back Street



BACK STREET 0748
DB C30

DB = Dry Back - Zum Verkleben

CREATION BY GERFLOR



BACK STREET

BACK STREET

Carmel



CARMEL 0618
DB C55 / C30 | **SOLID CLIC** C55 / C30
RIGID AC C55 | LL C55 | LL AC C55



DB = Dry Back - Zum Verkleben

CREATION BY GERFLOR



CARMEL

CARMEL

Silver City



SILVER CITY 0373
DB C55 / C30

DB = Dry Back - Zum Verkleben

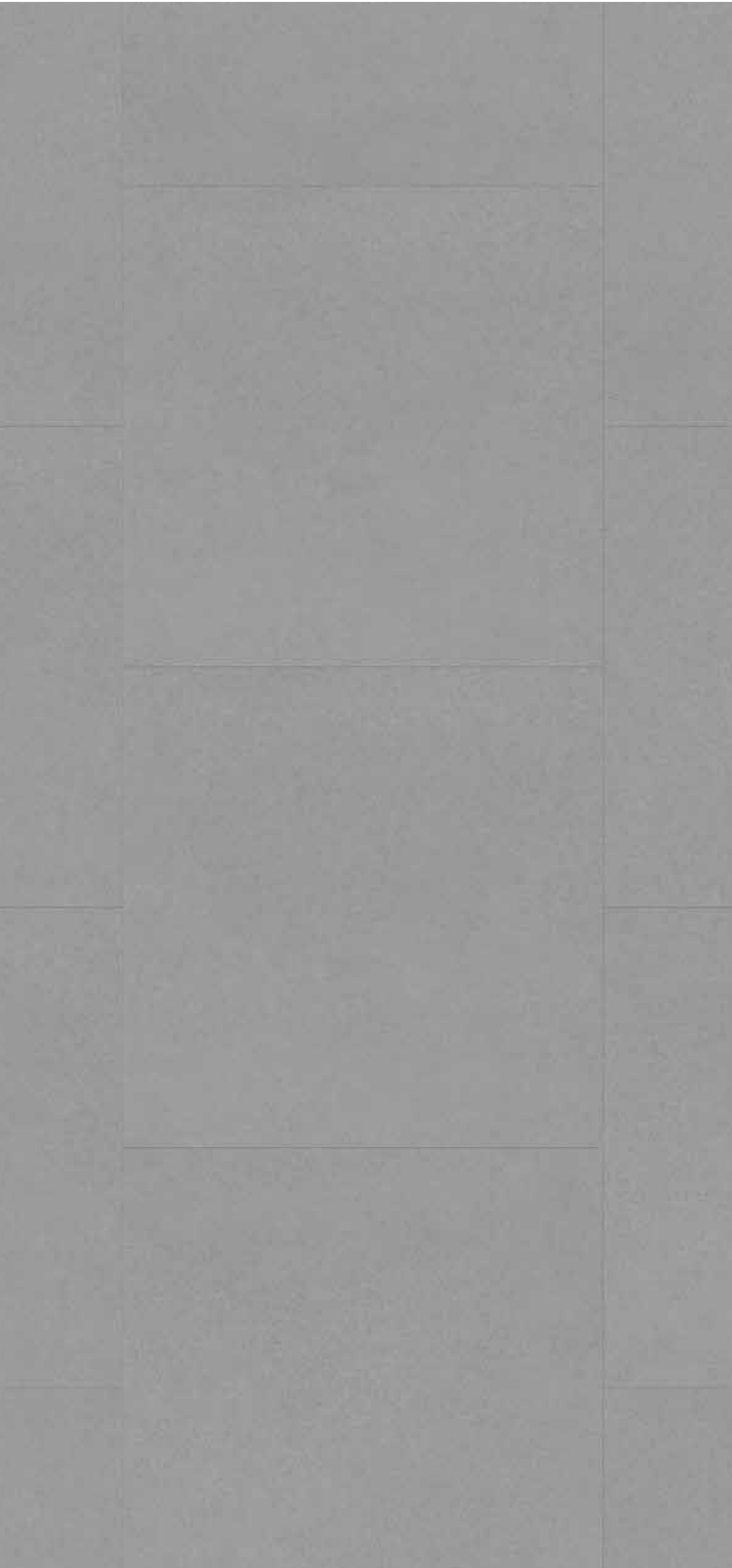
CREATION BY GERFLOR



SILVER CITY

SILVER CITY

Urban Street



URBAN STREET BEIGE 1285
DB C55 / C30



URBAN STREET LIGHT 1283
DB C55 / C30 | SOLID CLIC C55
LL C55



URBAN STREET MEDIUM 1284
DB C55 / C30 | SOLID CLIC C55
LL C55



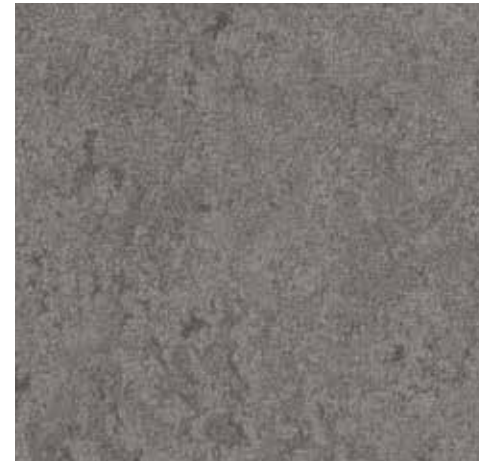
DB = Dry Back - Zum Verkleben

CREATION BY GERFLOR



URBAN STREET LIGHT / URBAN STREET MEDIUM

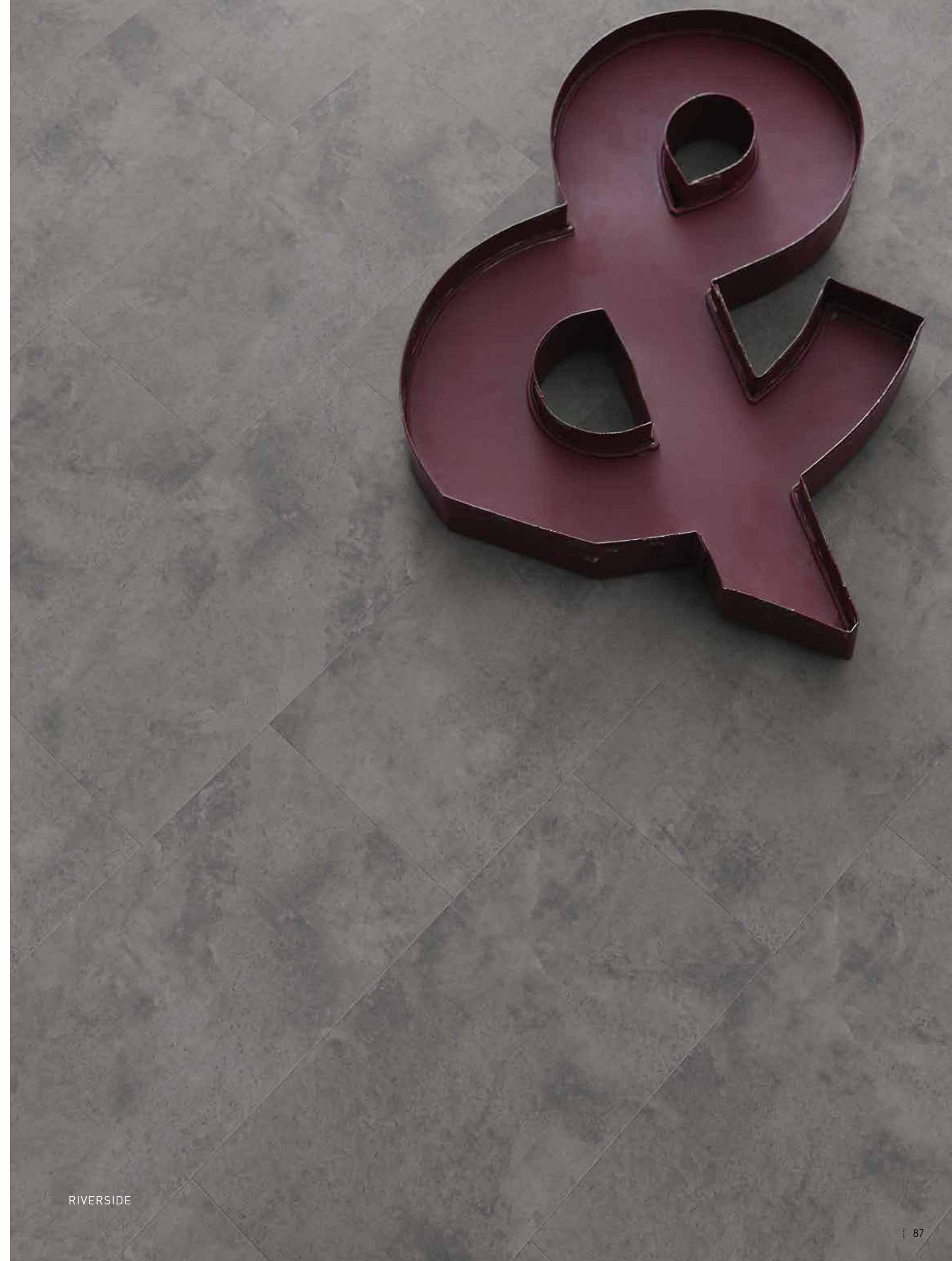
Riverside



RIVERSIDE 0436
DB C55 / C30 | **SOLID CLIC** C55 / C30
RIGID AC C55 | LL C55

DB = Dry Back - Zum Verkleben

CREATION BY GERFLOR



RIVERSIDE

RIVERSIDE

Parker Station



PARKER STATION 0374
DB C55 / C30 | **SOLID CLIC** C55 / C30
RIGID AC C55 | LL C55 | LL AC C55

DB = Dry Back - Zum Verkleben

CREATION BY GERFLOR



PARKER STATION

PARKER STATION

Oppland Stone



OPPLAND STONE 1291
DB C30

DB = Dry Back - Zum Verkleben

CREATION BY GERFLOR



OPPLAND STONE

OPPLAND STONE

Creation für jede Anforderung
 der passende LVT Designboden
 Creation: the most comprehensive LVT range

Gerflor The Reference!

FABRIK MIX JUTE

PACKAGING

Format (mm)	m ² /box	m ² /pallet
-------------	---------------------	------------------------

Creation 55 Trend		
184 x 1219	3,36	215,04
230 x 1500	3,11	214,59
152 x 762	3,82	213,92
457 x 914	3,76	218,08
610 x 610	3,35	187,60

Creation 55 Design		
184 x 1219	3,36	215,04
230 x 1500	3,11	214,59
914 x 914	4,18	192,28

Creation 55 Solid Clic		
212 x 1239	1,84	104,88
240 x 1461	2,1	100,80
389 x 729	1,7	102

Creation 55 Rigid Acoustic		
125 x 750	1,50	84
177 x 1219	1,73	96,88
225 x 1524	1,71	92,34
457 x 914	1,67	93,52

Creation 55 Looselay		
229 x 1220	2,23	124,88
500 x 500	2	128
600 x 600	2,16	95,04

Creation 55 Looselay Acoustic		
229 x 1220	2,23	124,88
500 x 500	2	128

Format (mm)	m ² /box	m ² /pallet
-------------	---------------------	------------------------

Creation 30 Design		
457 x 914	3,76	248,16
610 x 610	3,35	234,50
184 x 1219	3,36	241,92
230 x 1500	3,80	250,80

Fischgrät-Verlegungen / Herringbone 184 x 1219	3,14	251,20
--	------	--------

Creation 30 Solid Clic		
212 x 1239	2,10	113,40
240 x 1461	2,45	117,60
389 x 729	1,98	106,92

Details auf gerflor.de
 More details on gerflor.com

Mehr als nur Bodenbelag...

More than a floor...

Dämmunterlagen / Underlayer

Creation Solid Clic

Gerflor Acoustic 15dB



Code: 1798
Format: 1m x 15lm

Gerflor Acoustic Plus 19dB



Code: 0704
Format: 0.98m x 15.3lm

Gerflor Silence Plus 19dB



Code: 5949
Format: 1.18m x 8.5lm

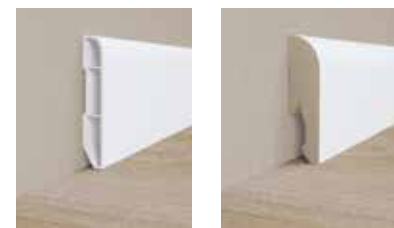
Creation (Dry Back)

Gerflor Smart Fix 16dB



Code: 1698
Format: 1m x 7.5lm

Sockelleisten / Design skirting



Weißer Sockelleiste - überstreichbar
White Skirting - can be painted over

Vinyl Skirting: 6086 + Color code / MDF Skirting: 5947 + Color code

Vinyl Code: 6086 S001 / MDF Code: 5947S001

Übergangprofil / Design coverstrip

Format: 45mm x 0.90m

Format: 45mm x 0.90m

Drei Einsatzbereiche / 3 uses



Code: 0647 + Color code
Verfügbare Designs auf gerflor.de
Available colors on gerflor.com

Code Alu: 0647 S001

1. **Dehnungsfuge**
Expansion gap
2. **Rampe**
Ramp
3. **Schwelle**
Threshold

Sauberlauf / Entrance Mat

Quickmat: selbstklebende Fliesen (Aufbauhöhe 12 mm) / Quickmat Tiles: Preadhesived planks (12mm thick)



Quickmat code 1725 / Profile - profiles 1726 / Winkel - angles 1727 - angepasst an Produkte mit 4 - 6 mm Aufbauhöhe / adapted to 4 to 6mm thick products

Neue Oberflächenvergütung

New surface treatment

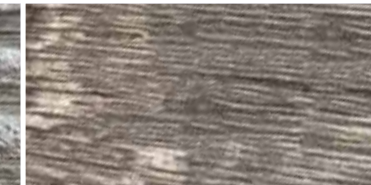


Verbesserte Performance Enhanced durability



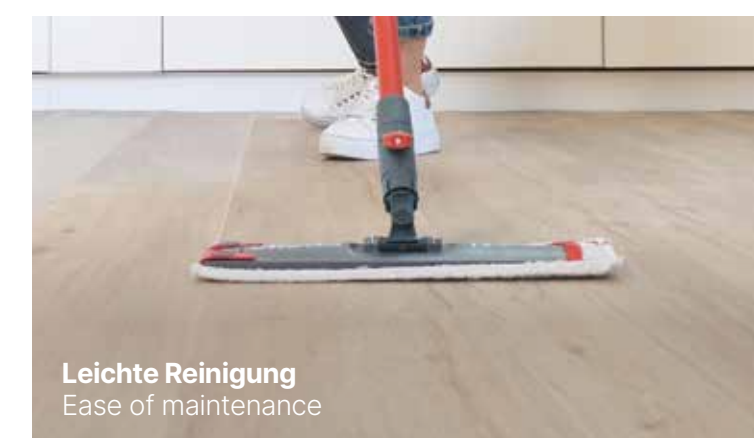
Beständigkeit gegen Mikroverkratzungen
Micro scratch resistance

Mikroskopische Ansicht (5-fach vergrößert) - Microscopic view (x5)



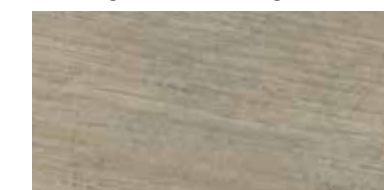
Standard LVT
Standard varnish

Creation



Leichte Reinigung
Ease of maintenance

Anschmutzung nach Reinigung
Fouling after cleaning



Standard LVT
Standard varnish

Creation

Unveränderte ultramatte Optik Unchanged visual aspect



Glanzmessung (60° Test)
Gloss level (60° test)



Standard LVT
Standard varnish

Creation 2019 / Creation 2022
unveränderte Optik
Unchanged visual aspect

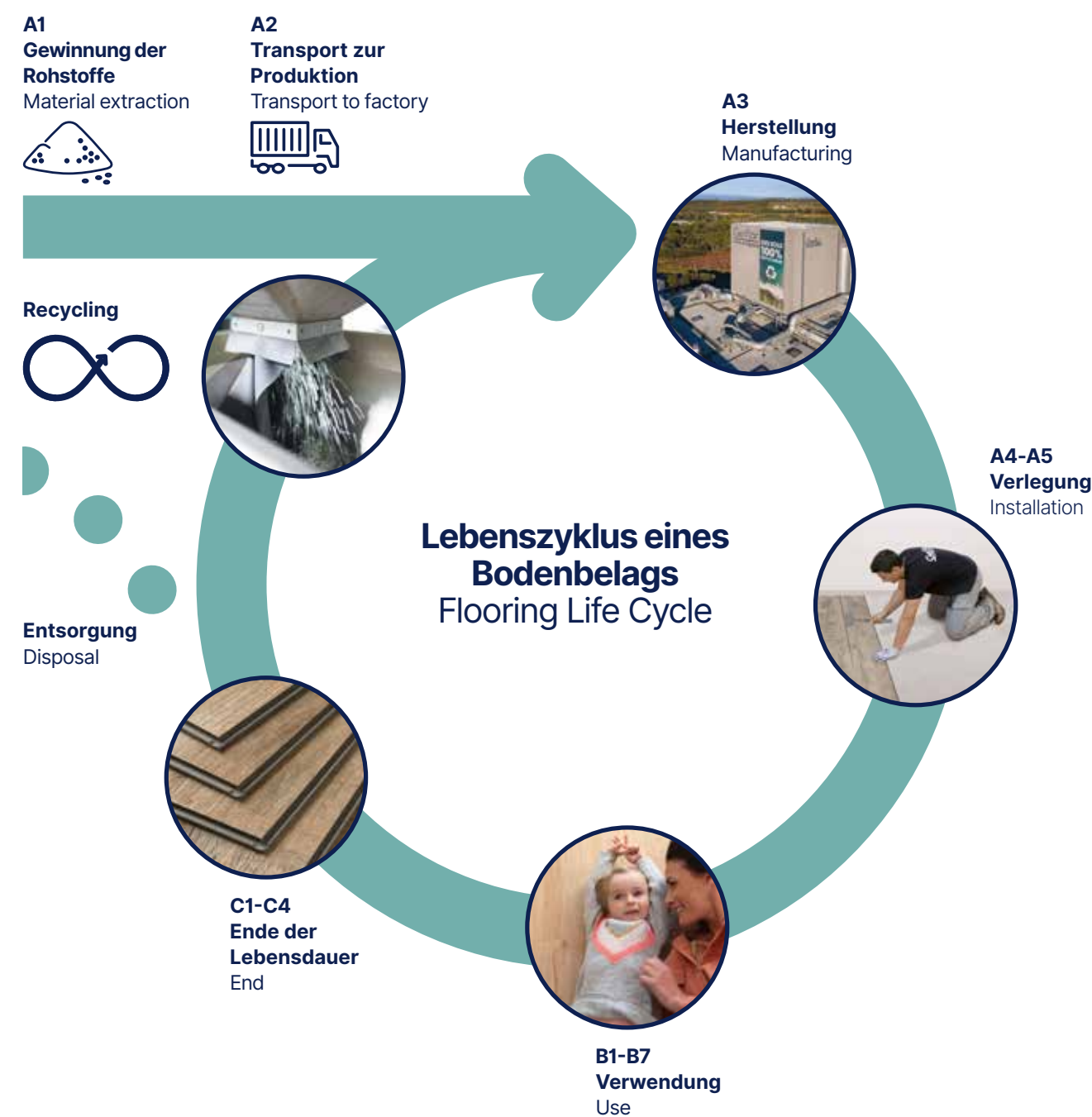
Reinigungs- und Pflegeanleitung auf gerflor.de
Maintenance guidelines available on gerflor.com

Unsere Verpflichtung für eine nachhaltige Zukunft

Our Commitments for a Sustainable future

Mit dem Ziel einer optimalen Ökobilanz werden alle Produkte von Gerflor im Kontext einer systematischen Lebenszyklusanalyse (LCA) entwickelt

All Gerflor product ranges are developed according to a life cycle analysis model



Die Ökobilanzen der Gerflor Produkte werden von unabhängigen Laboren überprüft und in Umwelt-Produktdeklarationen (EPDs) transparent ausgewiesen.

Third-party verified life cycle analysis of our products can be found in their Environmental Product Declaration (EPD)

Creation, eine Referenz in puncto Nachhaltigkeit

Creation, the reference in sustainability



Reduzierter CO₂-Fußabdruck

- Produktionsstandorte in Europa
- Hohe Standards ISO 14001 (Umwelt) und ISO 50001 (Energie)
- Einsatz erneuerbarer Energien

Carbon footprint

- Manufacturing Footprint in Europe
- ISO 14001 & 50001 certifications
- Renewable energy

Drei LVT Werke in Europa
3 factories in Europe



Kreislaufwirtschaft

- 100 % recycelbare Produkte
- Bis zu 55 % Recyclinganteil
- Eigene Recyclingcenter
- Verlegesysteme ohne Klebstoff
- Verpackungen aus 100 % Recyclingpapier

Circularity

- 100% recyclable products
- Up to 55% recycled content
- Adhesive Free solutions
- Packaging using 100% recycled cardboard



Gesundheit und Sicherheit

- 100 % REACH konform
- Phthalatfrei*
- Formaldehydfrei
- Beste Raumluftqualität:
TVOC < 10 µg/m³
(ISO 16000-6)

Health and safety

- 100% Reach compliant
- Phthalate free*
- Formaldehyde Free
- Indoor Air Quality:
TVOC < 10 µg/m³ after 28 days

* Ausgenommen Recyclinganteil
* Except recycled content



we care / we act

Creation 55 Creation 30

		Creation 55		Creation 55 Solid Clic	Creation 55 Rigid Acoustic	Creation 55 Looselay	Creation 55 Looselay Acoustic	Creation 30	Creation 30 Solid Clic
		TREND	DESIGN					DESIGN	

BESCHREIBUNG / DESCRIPTION

Gesamtdicke / Total Thickness	EN ISO 24346	mm	2.50	5.00	6.00	4.50	5.50	2.00	4.50	
Dicke der Nuttschicht / Thickness of the wearlayer	EN ISO 24340	mm	0.55	0.55	0.55	0.55	0.55	0.30	0.30	
Flächengewicht / Weight	EN ISO 23997	g/m ²	3 850	4 410	7 781	9 480	7 500	7600	3 460	7 118
Format / Size Planken-/Fliesenanzahl pro Karton/m ² pro Karton Number of planks or tiles per box / Sqm per box	ISO 24342	mm	184 x 1219 / 15 / 3.36 457 x 914 / 9 / 3.76 610 x 610 / 9 / 3.35 230 x 1500 / 9 / 3.11	184 x 1219 / 15 / 3.36 230 x 1500 / 9 / 3.11 914 x 914 / 5 / 4.18	212 x 1239 / 7 / 1.84 240 x 1461 / 6 / 2.10 389 x 729 / 6 / 1.70	125 x 750 / 16 / 1.50 177 x 1219 / 8 / 1.73 225 x 1524 / 5 / 1.71 457 x 914 / 4 / 1.67	229 x 1220 / 8 / 2.23 500 x 500 / 8 / 2.00 600 x 600 / 6 / 2.16	229 x 1220 / 8 / 2.23 500 x 500 / 8 / 2.00	457 x 914 / 9 / 3.76 610 x 610 / 9 / 3.35 184 x 1219 / 15 / 3.36 230 x 1500 / 11 / 3.80 184 x 1219 / 14 / 3.14	212 x 1239 / 8 / 2.10 240 x 1461 / 7 / 2.45 389 x 729 / 7 / 1.98
	Planken-/Fliesenanzahl/m ²		152 x 762 / 33 / 3.82							

KLASSIFIKATION / CLASSIFICATION

Produktnorm / Product Specification	-	-	EN ISO 10582	EN ISO 10582	EN ISO 10582	EN ISO 10582	EN 651	EN ISO 10582	EN ISO 10582
Europäische Klassifizierung / European Classification	EN ISO 10874	class	33 - 42	33 - 42	33 - 42	33 - 42	33 - 42	23 - 31	23 - 31
Brandverhalten / Fire Rating	EN 13501-1	class	Bfl-s1	Bfl-s1	Bfl-s1	Bfl-s1	Bfl-s1	Bfl-s1	Bfl-s1
Begehaufung / Static Electrical Propensity	EN 1815	kV	< 2	< 2	< 2	< 2	< 2	< 2	< 2
Rutschhemmung / Slip Resistance Wet ⁽¹⁾	DIN 51130 / BGR 181	class	R10	R10	R10	R10	R10	R10	R10

TECHNISCHE EIGENSCHAFTEN / PERFORMANCES

Verschleißverhalten / Wear Resistance	EN 660.2	mm ²	< 2.0	< 2.0	< 2.0	< 2.0	< 2.0	< 2.0	< 2.0
Verschleißgruppe / Wear Group	GB 30	group	T	T	T	T	T	T	T
Bindemittelgehalt / Type Binder content	ISO 10582	group	I	I	I	I	I	I	I
Maßstabilität (Norm) / Dimensional stability (norm)	EN ISO 23999	%	≤ 0.25	≤ 0.15	≤ 0.15	≤ 0.15	≤ 0.15	≤ 0.25	≤ 0.15
Maßstabilität (Durchschnittswert) / Dimensional stability (average measured value)	-	%	≤ 0.10	-0.05	≤ 0.10	-0.05	-0.05	≤ 0.10	-0.05
Resteindruck / Residual Indentation	EN ISO 24343-1	mm	≤ 0.10	≤ 0.10	≤ 0.10	≤ 0.10	≤ 0.20	≤ 0.10	≤ 0.10
Trittschallverbesserungsmaß / Impact sound insulation	EN ISO 717-2	dB	4	4	19	7	19	4	4
Raumschall / Room Impact	NFS 31074	dB	77	79	81	73	70	77	79
Stuhlleistungsprüfung, Typ W / Castor chair test	ISO 4918	-	OK	OK	OK	OK	OK	OK	OK
Wärmeleitfähigkeit / Thermal Conductivity	EN ISO 10456	W/(m.K)	0.25	0.25	0.25	0.25	0.25	0.25	0.25
Lichtechtheit / Colour Fastness	EN 20 105 - B02	Degree	≥ 6	≥ 6	≥ 6	≥ 6	≥ 6	≥ 6	≥ 6
Oberflächenvergiftung / Surface Treatment	-	-	ProtecShield™	ProtecShield™	ProtecShield™	ProtecShield™	ProtecShield™	ProtecShield™	ProtecShield™
Verhalten gegenüber Chemikalien ⁽²⁾ / Chemical Products Resistance ⁽²⁾	EN ISO 26987	-	Excellent	Excellent	Excellent	Excellent	Excellent	Excellent	Excellent

UMWELT/RAUMLUFTQUALITÄT / ENVIRONMENT/INDOOR AIR QUALITY

TVOC (28 Tage) / TVOC after 28 days	ISO 16000-6	micrograms/m ³	≤ 10	≤ 10	≤ 10	≤ 10	≤ 10	≤ 10	≤ 10
Zeugnis / Certification	-	-	Floorscore	Floorscore	Floorscore	Floorscore	Floorscore	Floorscore	Floorscore

CE KENNZEICHNUNG / CE MARKING

CE	EN 14041	-							
----	----------	---	--	--	--	--	--	--	--

[1] Schiefe Ebene / Ramp test with oil

[2] Beständig gegenüber nicht färbenden alkoholhaltigen Handdesinfektionsmitteln, Haushaltschemikalien und verdünnten Säuren und Laugen bei kurzzeitiger Einwirkung.

IMPORTANT: The information contained in this document is valid from 01/05/2022 and is subject to change at any time without notice. In the context of constantly changing technology, our customers are responsible, prior to any use, for checking with us that this document is the version in force.



Ganz gleich, welcher Einsatzort und welches Projekt, ob Renovierung oder Neubau: Die Lösung ist immer Creation.

Whatever the traffic, whatever your project - renovation or new build - your solution is in the Creation Collection!



Creation 30

Klassifizierung 31
European Class 31

- Creation 30 (Dry Back)
- Creation 30 Solid Clic

Creation 40

Klassifizierung 32
European Class 32

- Creation 40 (Dry Back)
- Creation 40 Solid Clic
- Creation 40 Rigid Acoustic

New



Creation 70

Klassifizierung 34
European Class 34

- Creation 70 (Dry Back)
- Creation 70 Clic
- Creation 70 Looselay
- Creation 70 Connect

Creation 55

Klassifizierung 33
European Class 33

- Creation 55 (Dry Back)
- Creation 55 Solid Clic
- Creation 55 Rigid Acoustic
- Creation 55 Looselay
- Creation 55 Looselay Acoustic

4

Kollektionen
Collections

5

Verlegesysteme
Installation Systems

500

Möglichkeiten
Options





Deutschland:

Gerflor Mipolam GmbH
Mülheimer Straße 27 / Tor 7
53840 Troisdorf
Tel: 0 22 41-25 30-0
e-mail: gerflormipolam@gerflor.com

Österreich:

Gerflor GmbH
Stubenring 14/Top 8a
A-1010 Wien
Tel: +43 (0)72 29/70 800-0
e-mail: austria@gerflor.com
www.gerflor.at

Schweiz:

Gerflor FEAG AG
Hädelistrasse 9
CH-8712 Stäfa
Tel: +41 (0)44 922 19 20
e-mail: switzerland@gerflor.com
www.gerflor.ch

Other countries: Gerflor International

Tel: +33 (0)4 74 05 40 00
Fax: +33 (0)4 74 05 03 13
e-mail: gerflorcontract@gerflor.com

gerflor.de / follow us   



RC Lyon B 726 580 152 - JPE - 05/2022 - Z0045822 - Prix indicatif documentation : 5€

we care / we act Our commitments for a sustainable future


CARBON FOOTPRINT*
-20 % kg CO₂ equivalent/m² between 2020 and 2025


BIOSOURCED CONTENT**
10 % by 2025


RECYCLED CONTENT
30 % by 2025


ADHESIVE FREE***
35 % by 2025


ANNUAL VOLUME RECYCLED
60 000 t by 2025



* Scopes 1 and 2 defined in the GHG protocol ** % of activity with biosourced materials *** % of activity - adhesive free solution